



Australian
Deer
Association



ESSENTIAL INFORMATION PACK
KOETONG-SHELLEY VICTORIA

NATIONAL HUNTING CAMPS 2025

NATIONAL HUNTING CAMPS

Welcome to the Essential Information Pack for the 2025 ADA National Hunting Camps. This year, we're excited to host four camp sessions in the scenic Koetong-Shelley district of NE Victoria, a prime location for hunting sambar, fallow, and red deer. Each camp will run for 11 consecutive nights, giving you the flexibility to join for as many nights as you wish.

Camp Dates for 2025:

- Camp 1: 21st March – 2nd April
- Camp 2: 6th June – 17th June
- Camp 3: 25th July – 5th August
- Camp 4: 19th September – 30th September

CAMP DATES AND LOCATION

Camp Dates

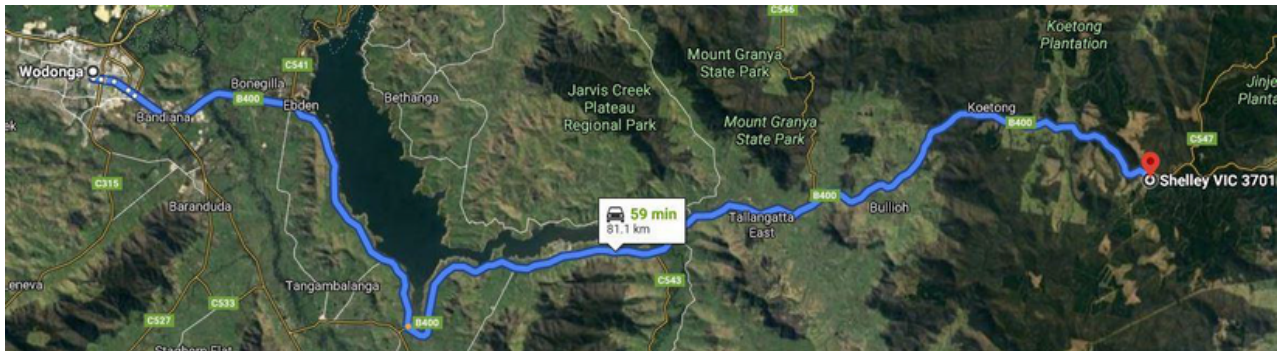
- Camp 1: 21st March – 2nd April
- Camp 2: 6th June – 17th June
- Camp 3: 25th July – 5th August
- Camp 4: 19th September – 30th September

Location:

Shelley Forest Camp

33 Avondale Road, Shelley, VIC 3701

(Accessible via Google Maps: Search "Shelley Forest Camp")



The National Hunting Camp is an hour's drive from Wodonga.

Shelley Forest Camp serves as an ideal base, providing access to diverse hunting grounds rich in sambar, fallow, and red deer populations. Located between Tallangatta and Corryong, this area features varied landscapes from pine forests to open grazing areas.

The camp is very isolated:

- **The closest flexi-tellers are 42 km away at Corryong and Tallangatta.**
- **The closest 24/7 petrol station is 82 km away at Wodonga.**
- **The closest day-time petrol stations are at Corryong and Tallangatta.**
- **The closest places to buy supplies are small supermarkets in Corryong and Tallangatta.**
- **The closest modern supermarkets are at Wodonga; Woolworths is open between 6 AM and midnight, seven days a week.**
- **Only Telstra Mobile Network services Shelley. Voice calls and data are now good.**

PRE-CAMP PREPARATION

Before You Arrive

- **Game Licence:** Ensure you have a current game licence from the Victorian Game Management Authority (GMA) specifically for deer stalking.
- **Camping Gear:** Depending on your accommodation choice (dormitory or outdoor), pack suitable camping gear, including an extra sleeping bag for chilly nights.
- **Weather Check:** NE Victoria's mountainous climate can be unpredictable, so come prepared for both rain and potential snowfall, especially for camps scheduled during cooler months.
- **Payment:** All fees are cash-only upon arrival. Make sure to bring the correct cash amount for your stay.

CAMP AMENITIES & ACCOMMODATION

Our camp offers two accommodation options to suit different preferences:

- **Dormitory Accommodation:** \$40 per night, per person. Dorms are basic but comfortable, with bunks available on a first-come, first-served basis.
- **Outdoor Camping:** \$35 per night, per person. Campers can pitch a tent, use a swag, or bring a caravan (non-powered sites).

Facilities Provided

- **Kitchen & Dining:** Fully equipped kitchen with refrigeration, BBQ, and dining space.
- **Hot Showers & Toilets:** 24/7 hot water and sanitary facilities.
- **Laundry:** Available for longer stays.
- **Gathering Space:** A communal lounge area where hunters can share tips, plan hunts, and enjoy the camaraderie of fellow ADA members.



Shelley's kitchen is where tomorrow's hunting is planned and new friendships are forged.



The camp's laundry (left), toilet block (centre) and kitchen (right).



Shelley Forest Camp after overnight snow in August 2018. Dormitories are in the background.

REGISTRATION AND ARRIVAL

How to Register

1. Complete the registration process via the events section on the Australian Deer Association website.
2. Specify your arrival date, number of nights, and preferred accommodation type (dorm or outdoor).
3. Note any special requirements, such as bringing a dog (must be approved in advance).

Upon Arrival

- Report to the main camp office for check-in and payment.
- Attend the evening briefing for hunting block allocations and important safety guidelines.
- Familiarise yourself with camp amenities and settle in.

HUNTING REQUIREMENTS & GUIDELINES

The ADA prioritises legal and responsible hunting practices. All hunters must adhere to the following:

1. **Firearms & Equipment:** Use only legally registered firearms of calibre .270 Win or greater (130 gr projectile minimum) for hunting deer in Victoria.
2. **Licences:** Carry a current Victorian game licence and firearms licence.
3. **Firearm Storage:** Firearms must be securely stored in vehicles when not in use and should not be kept in camp buildings.
4. **Legal Hunting Zones:** Stay within assigned blocks, and adhere to legal hunting areas as designated by the GMA and MoreToExplore app.

Safety Practices

- No spotlights are allowed in designated deer habitats.
- Hunters are prohibited from firing within camp premises.
- Wear blaze orange clothing to enhance visibility.

Note: Any form of illegal hunting will result in immediate expulsion from the camp and may be reported to authorities.

FIREARM SAFETY

10 Basic Rules

Rule 1: Treat every firearm as loaded

Rule 2: Always point firearms in a safe direction

Rule 3: Load a firearm only when ready to fire

Rule 4: Identify your target and what is behind it

Rule 5: Check your firing zone

Rule 6: Store firearms and ammunition safely

Rule 7: Avoid alcohol and drugs when handling firearms

Rule 8: Never have loaded firearms in the car, home or camp

Rule 9: Never fire at hard surfaces or water

Rule 10: Don't climb fences or obstacles with loaded firearms

Further Reading

<https://firearmsafety.org.au>

VICTORIAN GAME LICENCE

Anyone wishing to hunt game in Victoria, including juniors (12-17 years) and international visitors, must hold a current Victorian Game Licence.

The Game Licence must be endorsed for the appropriate type(s) of game that you wish to hunt and only permits you to hunt game in Victoria.

Children under 12 years old are not permitted to use a firearm or to hunt or take game.

Further Reading

<https://www.gma.vic.gov.au>

Apply for a Victorian Game Licence

<https://licensing.gma.vic.gov.au>

MORETOEXPLORE APP

The More To Explore app also provides detailed information on where to hunt.

Download the App

iPhone from the App Store

Android at the Google Play store

NAVIGATION & EQUIPMENT

Due to the rugged nature of NE Victoria, hunters must be well-equipped for both navigation and emergency situations.

Navigation Essentials

- **GPS & Maps:** A GPS device (or GPS-enabled phone app) is essential. Laminated maps and compass are recommended backups.
- **Mobile Apps:** MoreToExplore and WillyWeather provide detailed terrain maps and weather updates.

Recommended Equipment

- **Communication:** A UHF radio (5-watt) is mandatory. In case of emergencies, this can be a lifeline.
- **Survival Kit:** Carry a bivvy bag, first-aid kit, thermal clothing, and extra water.
- **Weather-Appropriate Clothing:** Thermal layers, fleece, synthetic outerwear, and waterproof boots. Avoid cotton garments that retain moisture and reduce body warmth.
- **Daypack:** A 30-litre backpack should hold essentials, including food, water, extra layers, and survival gear.

EMERGENCY PREPAREDNESS

Being isolated in mountainous terrain requires strict attention to safety.

1. **Buddy System:** All hunters are assigned a buddy, even if hunting separately. Buddies will be aware of each other's plans and whereabouts in case of emergencies.
2. **Personal Locator Beacon (PLB):** Recommended if hunting more than 2 km from your vehicle.
3. **Weather Awareness:** Be prepared for sudden weather changes and carry enough food and water for an overnight stay in case of unexpected delays.

Emergency Contact

National Hunting Camp Committee: John Macleod

Phone: 0417 126 240

Email: john.mithramarketing@gmail.com

For emergencies, dial 000 (available on Telstra network).

ENVIRONMENTAL & COMMUNITY RESPECT

The ADA is committed to preserving the natural environment and fostering respectful relationships with the local community.

- **Leave No Trace:** Pack out all waste, including food wrappers, and avoid disturbing natural habitats.
- **Respect Regulations:** Follow all state and local guidelines for hunting and camping.
- **Community Engagement:** Engage positively with locals when visiting towns for supplies.

FREQUENTLY ASKED QUESTIONS

1. **Can I bring a non-member guest?** All participants must be financial ADA members. Contact our membership officer to upgrade to a family membership if needed.
2. **Are dogs allowed?** Yes, with prior approval. Dogs must remain in outdoor camping areas and be controlled at all times. Only one dog per hunter is permitted.
3. **What if I don't have a 4WD?** Hunting blocks are assigned based on vehicle type, so there are options for 2WD hunters, though accessibility may be limited in certain areas.

FINAL REMINDERS

- Ensure all licenses and permits are current.
- Pack cash to cover all camp fees.
- Bring extra supplies for unexpected weather or delays.
- Arrive prepared for an exciting, safe, and respectful hunting experience!

We look forward to welcoming you to the 2025 ADA National Hunting Camps!

APPENDIX ONE

GETTING GPS READY

GPS handheld units, also known as GNSS receivers, need to be set-up correctly. Unless the operator spends a few minutes to program their unit for Australian requirements, units will report positional errors of up to 200 metres, possibly more. The settings you need to check are:

1. Datum.

Garmin provide over 120 datums to choose from; however, select either **GDA94** or **GDA** or **GDA2020**; or **WGS84** if you want **MGRS** (**M**ilitary **G**rid **R**eference **S**ystem).

2. *Either* Position Format. *or*

Position Format: **MGRS**

Map Datum: **WGS84** (default)

Map Spheroid: **WGS84** (? default)

Position Format.

Position Format: **hddd°mm.mmm'**

Map datum: **GDA, GDA94 or GDA2020**

Map Spheroid: **GRS80** (? default)

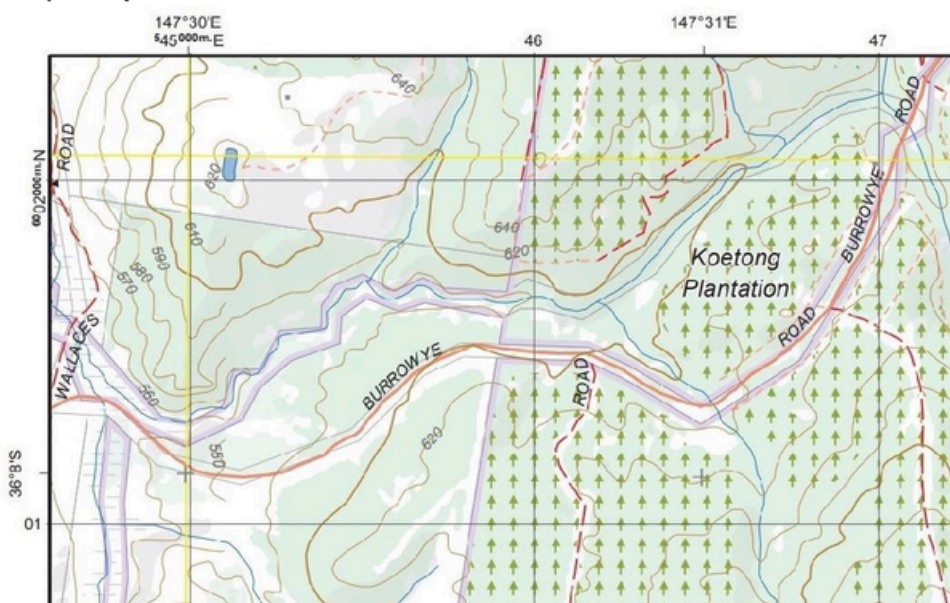
Your GNSS might select **Map Spheroid** by default upon your choice of **Map Datum** – but always check!

3. WAAS/EGNOS.

Always turn **WAAS** and **EGNOS** to **OFF**. They are not relevant in Australia, and will only use valuable battery charge.

4. **GPS** (USA), **GLONASS** (Russia), **Galileo** (European Union), **QZSS** (Japan), **IRNSS** (India) are satellite systems. **Selecting more systems will provide greater accuracy, but will rapidly drain the unit's battery.** If accuracy is important to you, choose **GPS + Galileo** (preferable to **GPS + GLONASS**), or if your unit supports it, **GPS + Galileo + GLONASS** which is the best option. Recent-model units also provide **QZSS** and **IRNSS** options.

5. If you have a recent model and expensive GNSS unit, choosing the **multi-band/multi-frequency option** will further improve the accuracy of the unit, but drains the battery even more quickly.

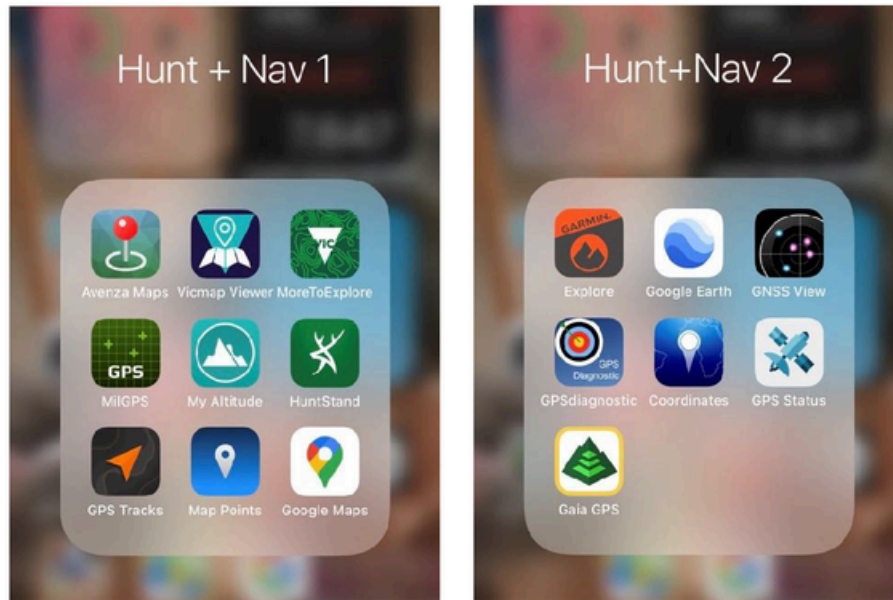


NW corner of Vicmap's Shelley North (8425-4-N) topographic map (1:25,000). The grid across the map, showing 545^{000}mE , 46 and 47 on the horizontal axis (**Eastings**), and 01 and 602^{000}mN on the vertical axis (**Northings**), is based on the **MGRS**. The **m** in the full Easting/Northing labels refers to metres, therefore this is a 1000 metre grid.

APPENDIX TWO

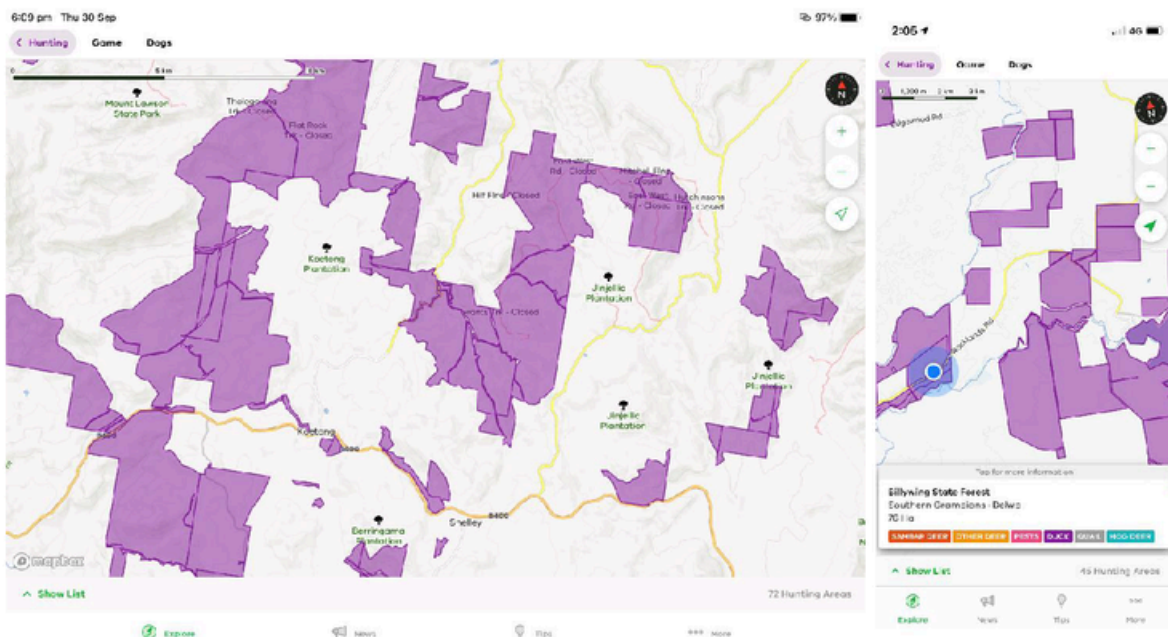
GETTING SMARTPHONE READY

Well-prepared hunters will have at least some of these apps on their phone:



MoreToExplore app

Shelley hunters should download the free **MoreToExplore** app that incorporates a state-wide layer showing all legal deer hunting areas. This can be set-up for use off-line. The app allows the hunter to always know where he/she is with respect to legal hunting areas. It is therefore indispensable for delineating no-go zones in NE Victoria's complex terrain. The app plots your real-time GPS locality, and informs about what game species can be taken.



Representative screen captures: **MoreToExplore** on iPad and iPhone

MilGPS app

How to turn your iPhone into an off-line GPS for \$17.99

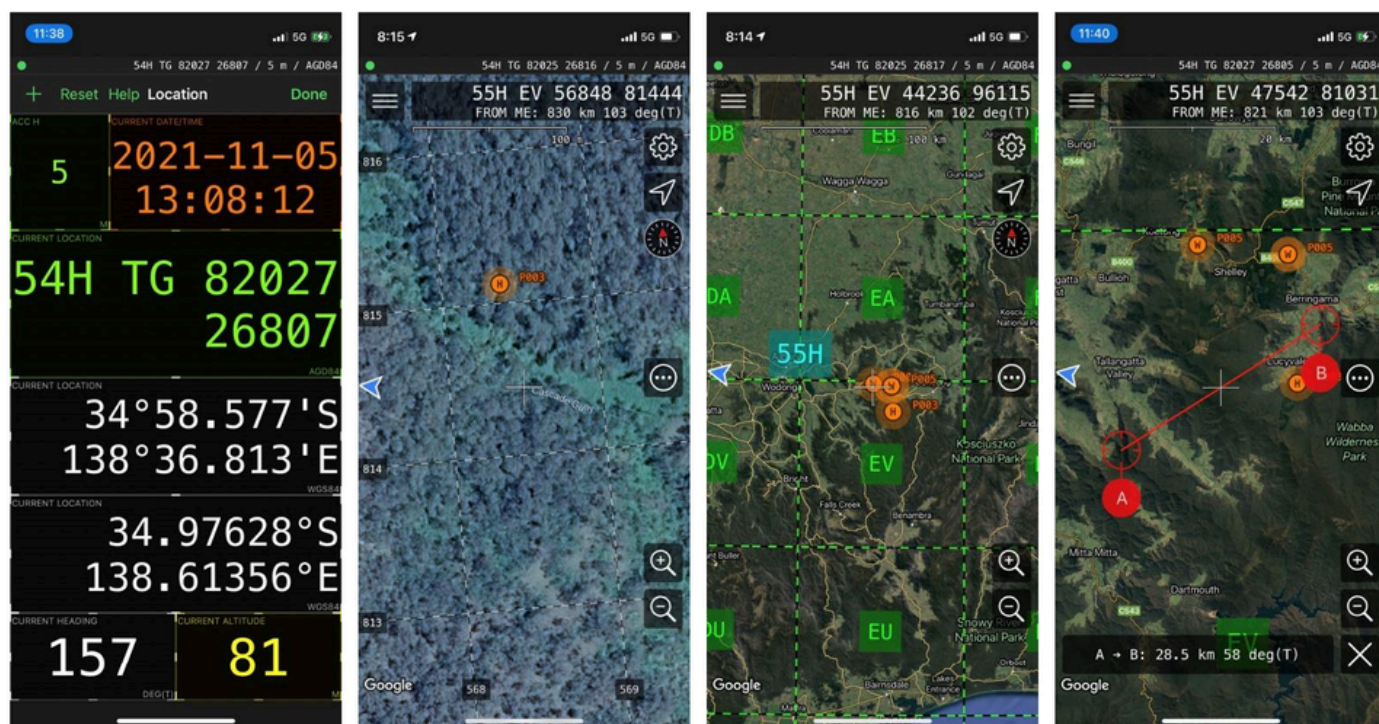
Some hunters will not have a dedicated GPS. That's fine – because it's easy to turn a smartphone into a state-of-the-art GPS. To turn an **iPhone** (not Android) into a GPS:

1. Download the **MilGPS** app onto your phone for \$17.99 (no recurring charges),
2. Install **Google Earth** onto your phone (you probably have already),
3. Install **Google Maps** on your phone (you probably have already),
4. Open **Google Maps** and go to the Shelley area,
5. For iPhone users, open **Google Maps** and save several overlapping areas around Shelley by going to the Tab at the base of the screen and going to **Download offline map > Download**. I suggest that you download several smaller maps of targeted areas, rather than go for one big download that will fill your cache.

Saved downloads will stay on your phone 30 days and then auto-delete for legal reasons.

The downloaded maps will be automatically available in **MilGPS**, **Google Earth** and **Google Maps**. No further messing around is needed.

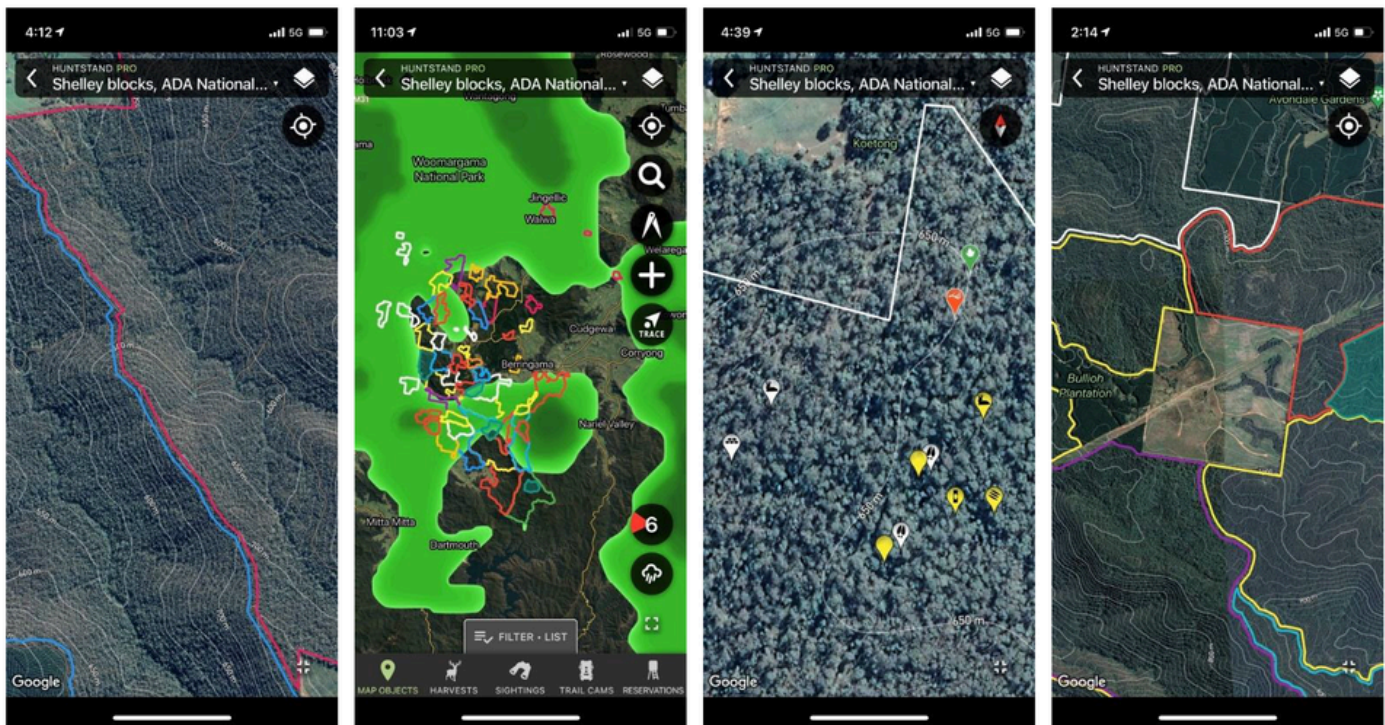
I always use **MilGPS** when hunting in Victoria. You can minimise battery drain by turning-off both WiFi and Bluetooth, and this is easily done by switching the phone to **Flight Mode**. Even then your phone will drain quickly, so you are advised to turn it off when stalking and use it just for checking the terrain every hour or over lunch. Also make sure your phone's screen brightness is turned down as low as it can go whilst still being readable.



Representative screen captures: MilGPS

HuntStand app

Registrants are advised to download the excellent **HuntStand** app which is available for both iPhones and android phones. Once registered, hunters will have auto-access to outlines of all the hunting blocks from within the app itself. This allows everyone to study the hunting blocks in detail well before arriving in camp. The Pro version of **HuntStand** attracts recurring charges, but might be overkill for the Shelley camp. The free version should suffice. Below are some **HuntStand** screen-captures. The coloured shapes are individual hunting blocks. Weather radar is also shown.



*Representative screen captures: **HuntStand***

HuntStand is somewhat different to **MilGPS** and the other programs in that one can build maps on a PC and then sync one's phone to import everything for use in the field. Also, downloading offline maps is easier and done within the app itself (not **Google Maps**). Downloaded maps stay on one's phone permanently, a very handy feature indeed!

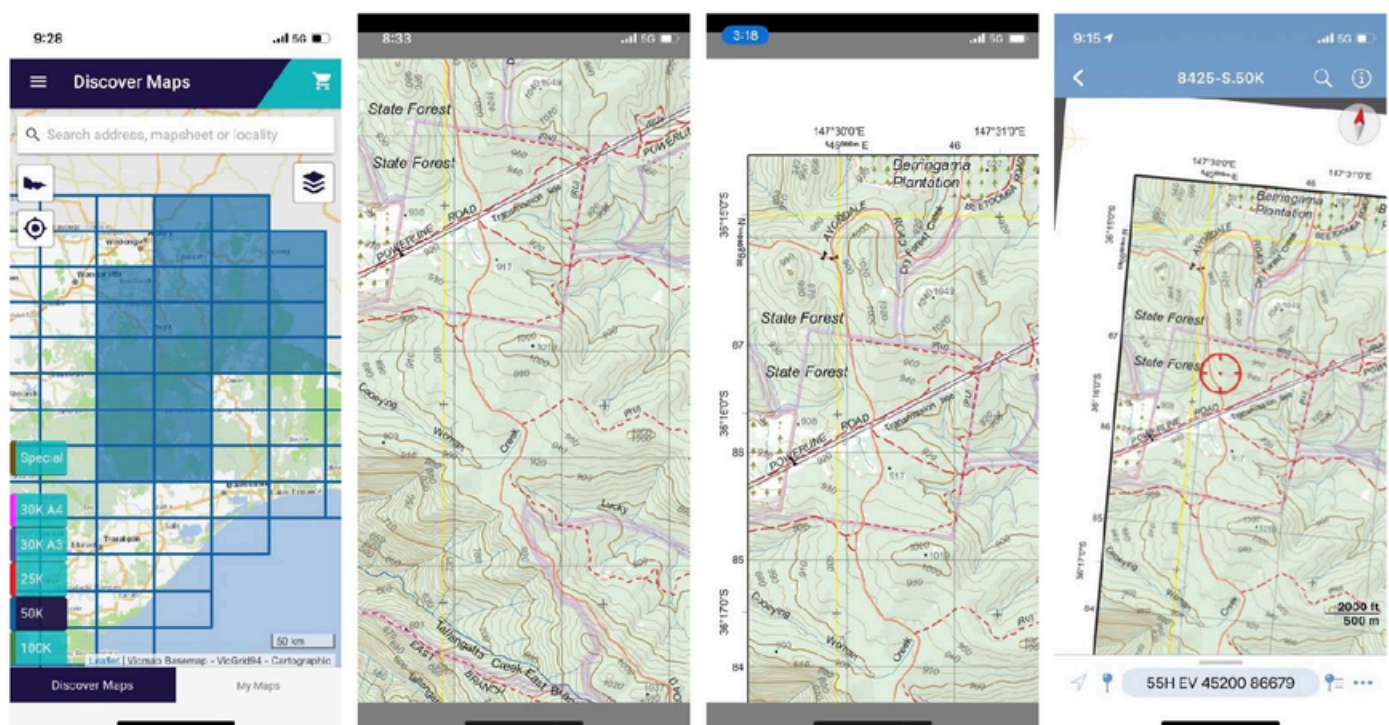
Once an ADA member is registered for the camp, he/she will receive an auto-email invitation to access hunting blocks via **HuntStand**.

Avenza Maps app

The best conventional mapping app for your smart phone is probably **Avenza Maps** because there is a fully functional free version! Also, some free maps are downloadable though **Avenza Maps**.

Vicmap Viewer app

The best topographic maps of eastern Victoria are from Vicmap, the Government of Victoria's mapping authority. GeoPDFs of Vicmap products can be purchased at <https://vicmaptopo.land.vic.gov.au/#/discover-map>. Better still, the same GeoPDF maps can be purchased via the free **Vicmap Viewer** app downloadable to your phone or tablet. Once a map has been purchased, it can be stored and viewed on smartphone via the app, and accessed off-line by **Avenza Maps** in the field which plot one's GPS position upon the map. 50k maps are the best scale for hunting and cost a reasonable \$8.50. Purchasing the file also entitles the buyer to print the map. If based in Melbourne, I can recommend ABC Maps in Lilydale for map printing. ABC Maps also offers map printing on waterproof paper. Below are some screen captures of the 50k index within **Vicmap Viewer**, parts of NARIEL (8425-S.50K) mapsheet, and also NARIEL viewed in **Avenza Maps**.



Representative screen captures: **Vicmap Viewer** (left, centre) and **Avenza Maps** (right)

APPENDIX THREE

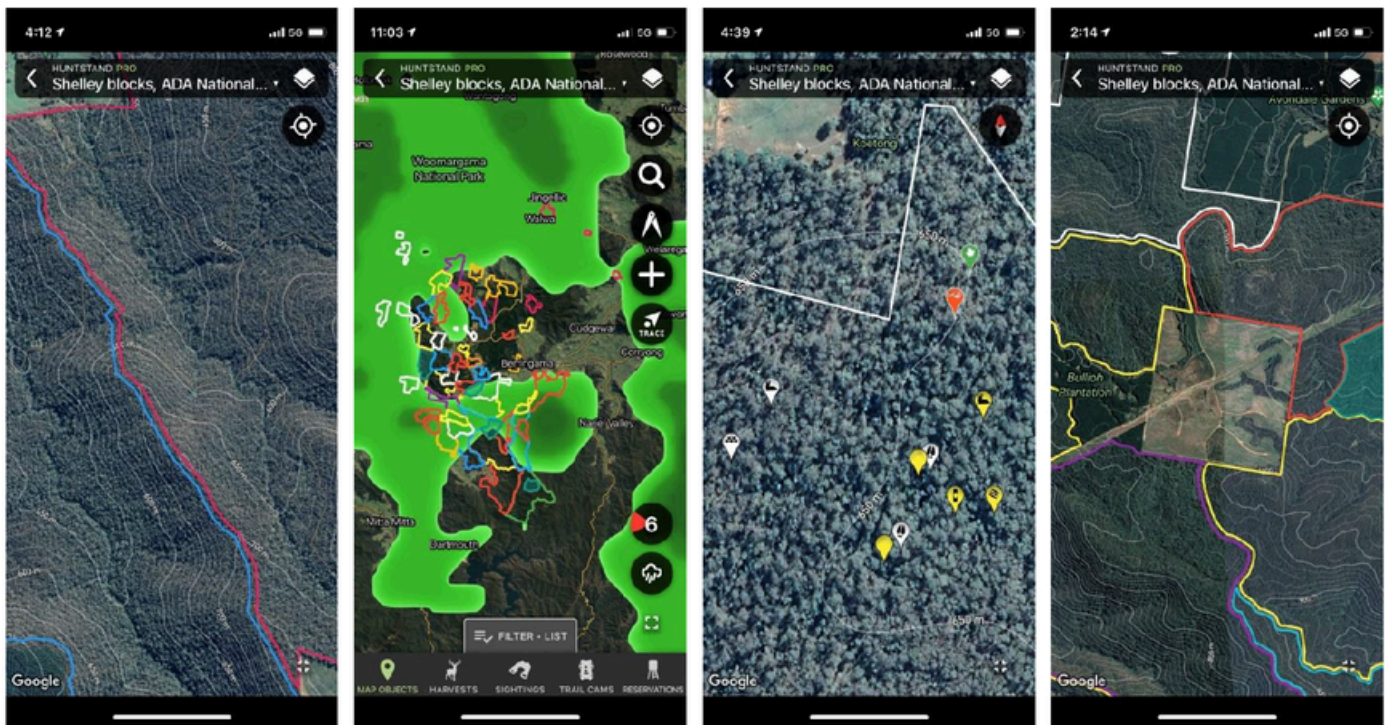
GETTING HUNTSTAND READY

HuntStand app is a smartphone and computer-based land-management and hunting tool.

Hunters who register for the ADA National Hunting Camp at Shelley have three choices:

1. Not use **HuntStand** (that's absolutely fine),
2. Use the free version of **HuntStand** (a good idea), or
3. Use **HuntStand Pro** (best choice, but normally costs ~ A\$50 per annum).

HuntStand takes **Google Earth** imagery and superimposes digitised hunting block boundaries and other features such as roads, and deer sightings and signs. Once fully set-up with **HuntStand**, hunters can take all their data sets (block boundaries, deer sightings etc) with them into the field. Once you use **HuntStand** the benefits are obvious – with a tap on your smartphone screen you can add or remove topographic contours, and different types of map imagery, and record your field observations in real-time – similar to a modern GPS.

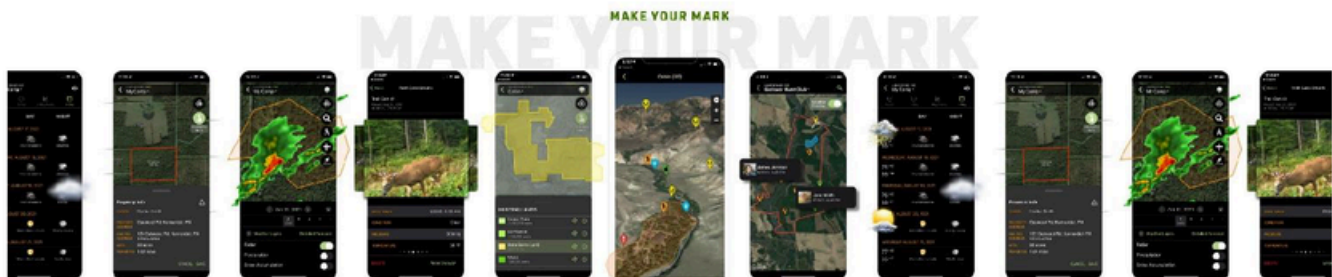
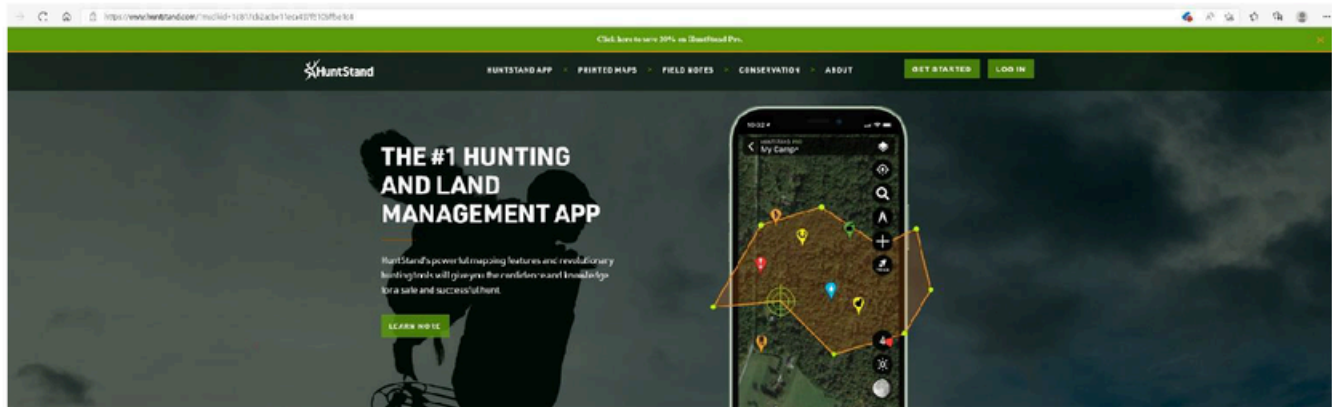


Representative **HuntStand** screen captures. Note the weather radar image, and the various icons used for sambar, fallow deer, red deer etc.

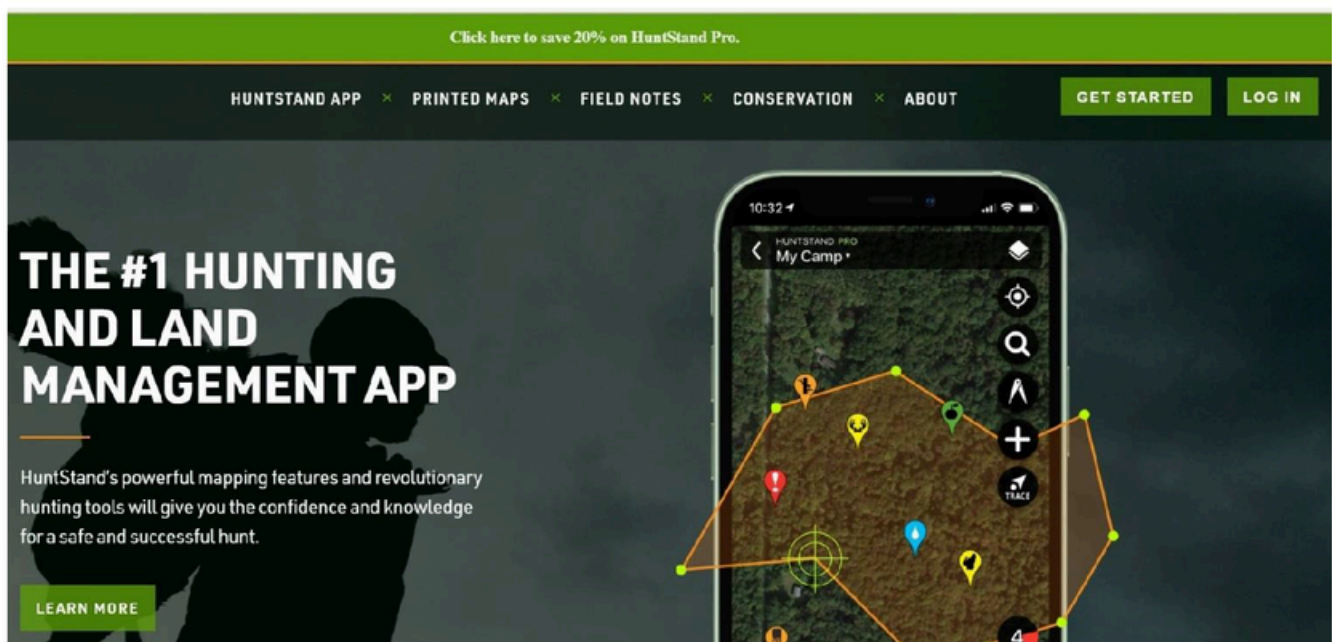
When hunting in an area with mobile phone reception, the free version is really all you need – that's because your phone will download satellite imagery via the cloud. But if you want to take the full functionality of **HuntStand** with you into back-blocks without mobile data coverage, you will need the Pro version. All hunting blocks around Shelley are back-blocks.

Instructions for setting-up HuntStand (free version)

1. Download **HuntStand** app to your smartphone.
2. Go to www.huntstand.com on your laptop. Hit the **GET STARTED** button.
3. Get your **Username** sorted-out, and your **Password** sorted-out.
4. Synchronise **HuntStand** app and **HuntStand** on your laptop (use **circular arrow** key).

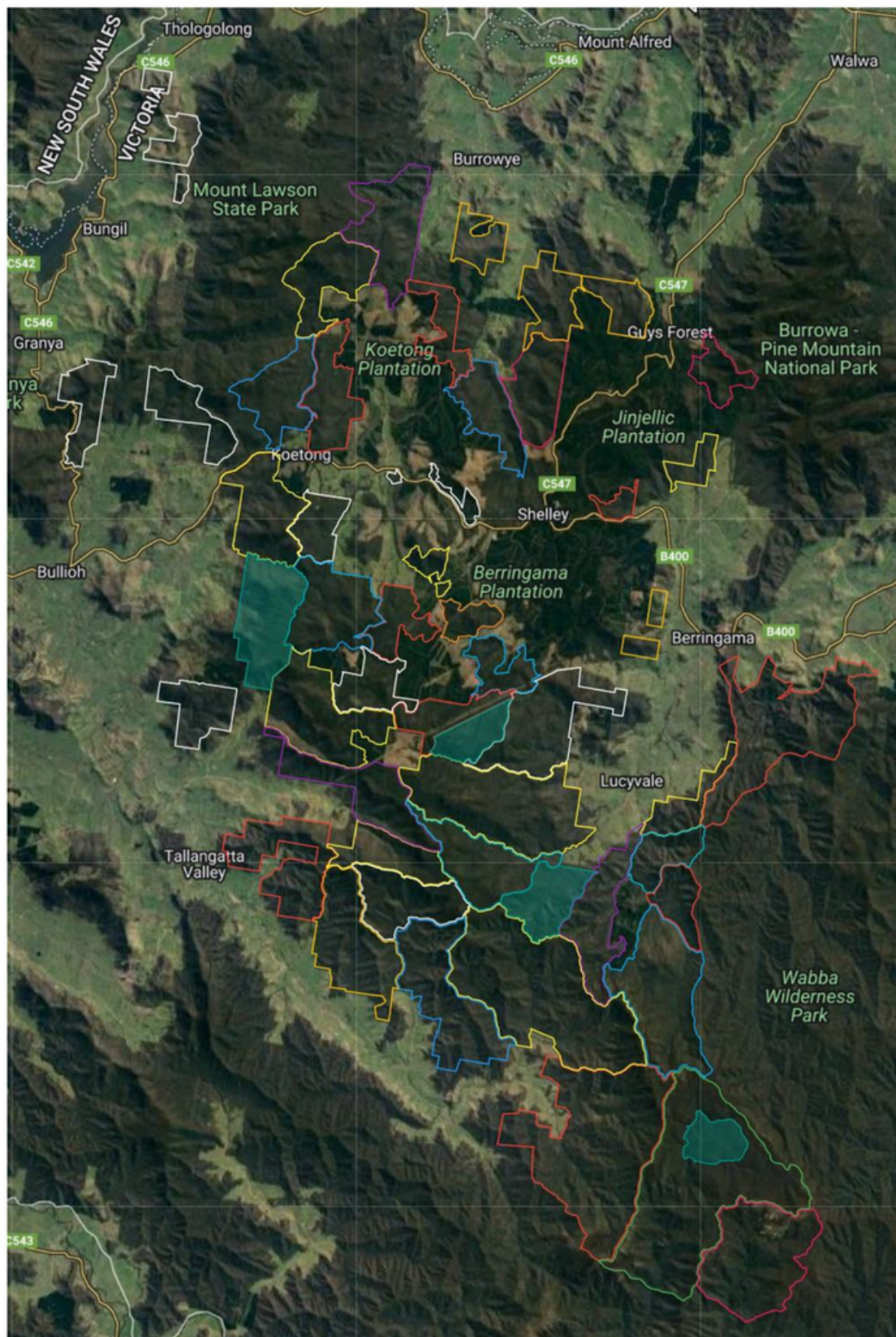


Typically there is a cost "saving" on offer re Huntstand Pro. I was lucky to get 30% off. Usually it is around 20% off, but always changing. You can either skip this purchasing step – or accept this less costly offer, and move on.



Once you finish steps 1 to 4, you have the free version of **HuntStand** up and running.

5. You'll receive, or will have already received an auto-email from me inviting you to share my "Hunt area" called **Shelley blocks, ADA National Hunting Camp**. I can share that with you by submitting your email address to the program. At my end, I can see whether you have accepted my invitation or not – I can also remove your access to it by deleting you from my list.



Once you accept my invitation you should be able to see Shelley's hunting blocks (numbered 1 to 42, and the most southern block with a pink outline numbered N6), as coloured jelly-bean-like outlines – see above. Make sure to use the **circular arrow** button in **HuntStand**

to sync your phone and your laptop, so as to import the coloured hunting blocks to your phone.

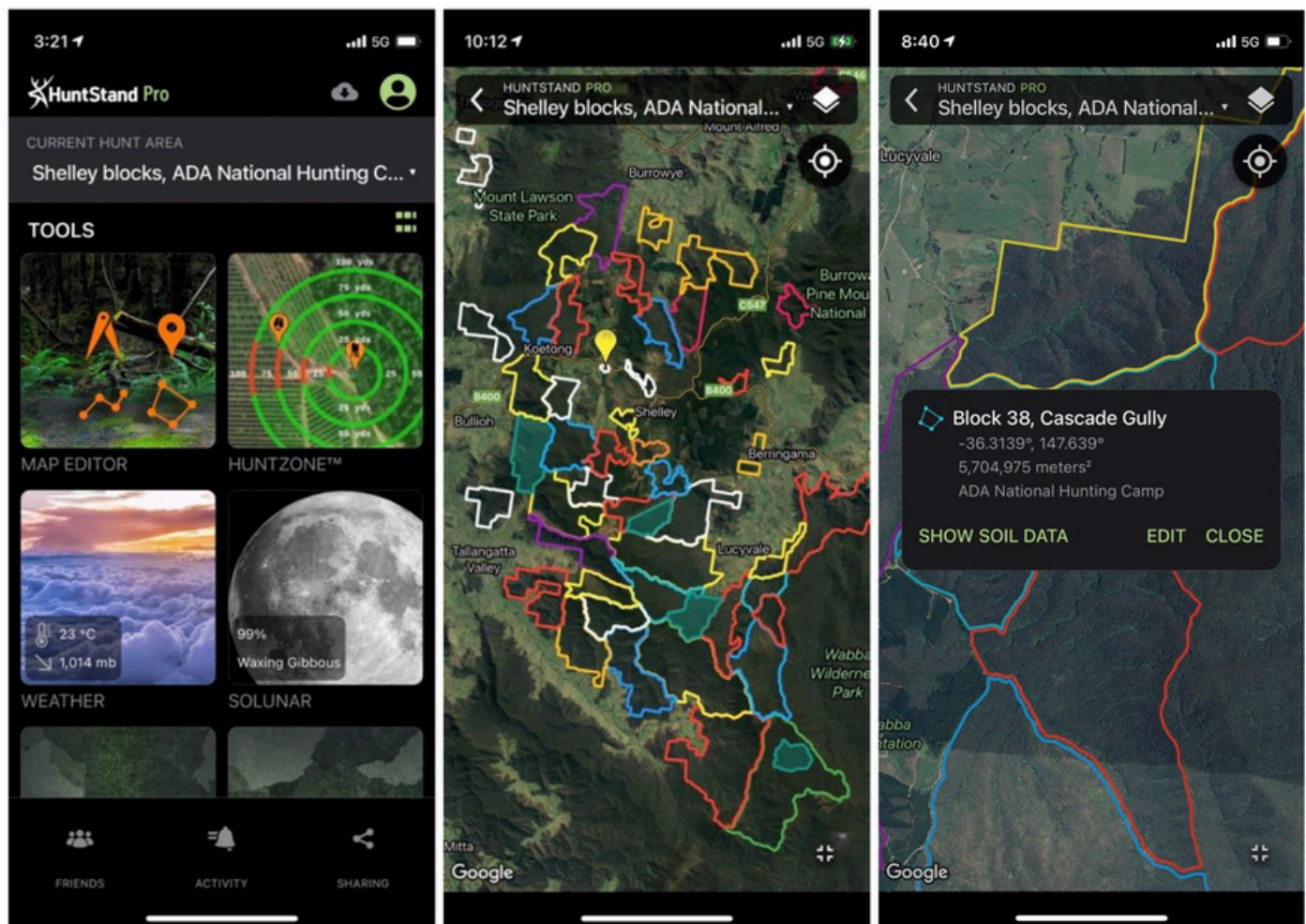
Once you can see the coloured hunting blocks on both your laptop AND your smartphone, you have successfully set-up the free version of **HuntStand** and are ready to consider the Pro version.

If you only wish to use the free **HuntStand** there is nothing more to do; however, if you want the full functionality of **HuntStand Pro** in areas without mobile data signal, please continue with the steps below.


Convince yourself that the free version of HuntStand is good-to-go

6. Open **HuntStand** on your phone.

7. Go to **MAP EDITOR** (see below).



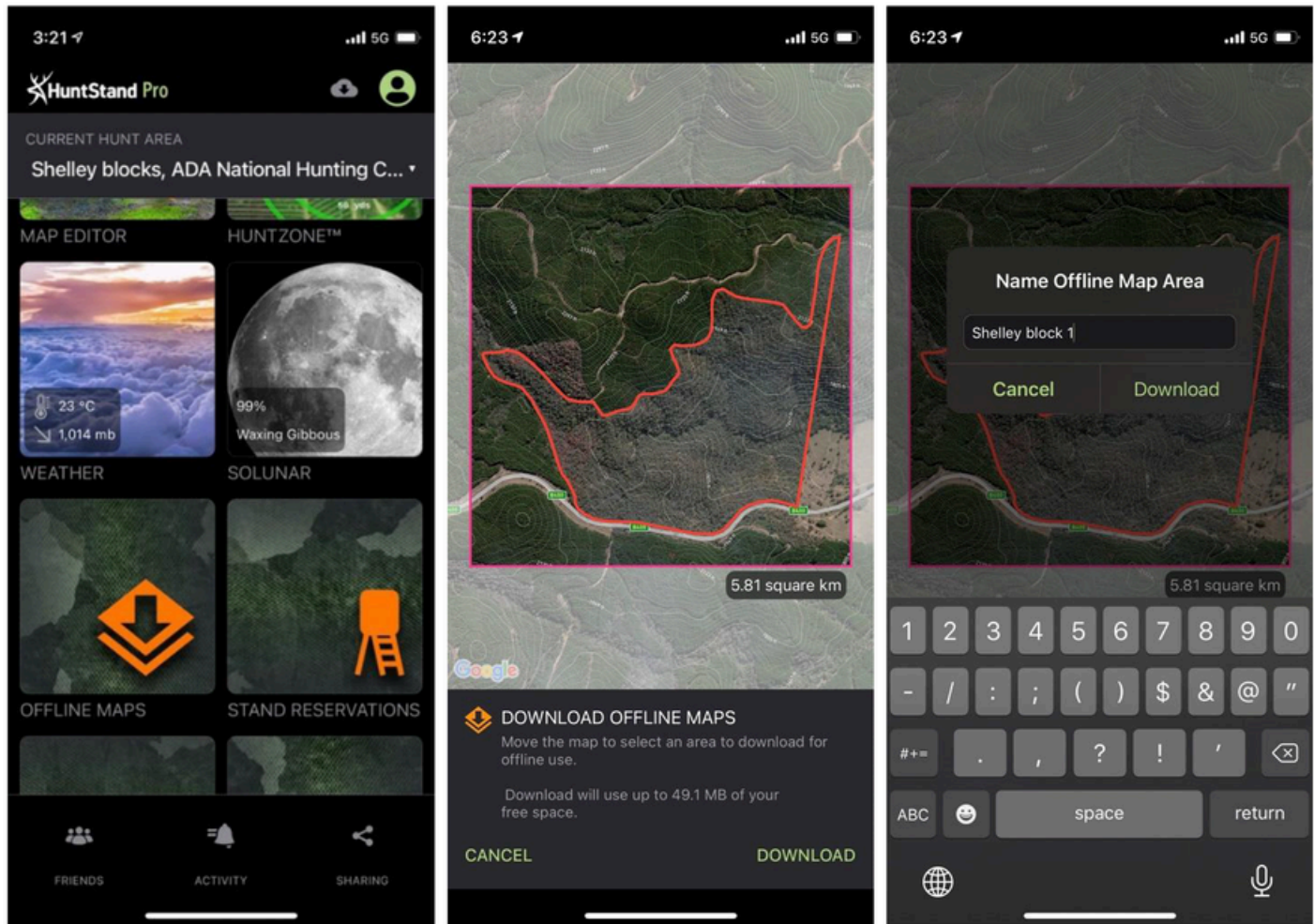
Use your finger to tap on a coloured hunting block – a dialog box will give you the block number, a name (if it has one), and its area in metres squared. The example above shows **Block 38** which in this case also has the name **Cascade Gully**. It has an area of 5.7 million m², i.e. 5.7 km² (570 hectares).

Tap somewhere outside a jelly-bean, and go back to the main menu using the  icon in top-left of phone screen.

Instructions for setting-up HuntStand Pro

Taking the next steps will allow you to take the full functionality of the program, and each hunting block into areas beyond mobile phone signal.

8. Go to **OFFLINE MAPS** (see below left).



Choose **DOWNLOAD NEW MAP**. It's around here that the program will prompt you to buy the Pro version. You might need to back-track to buy it at the reduced price.

Zoom over a hunting block – I suggest you are systematic – start by zooming over Block 1.

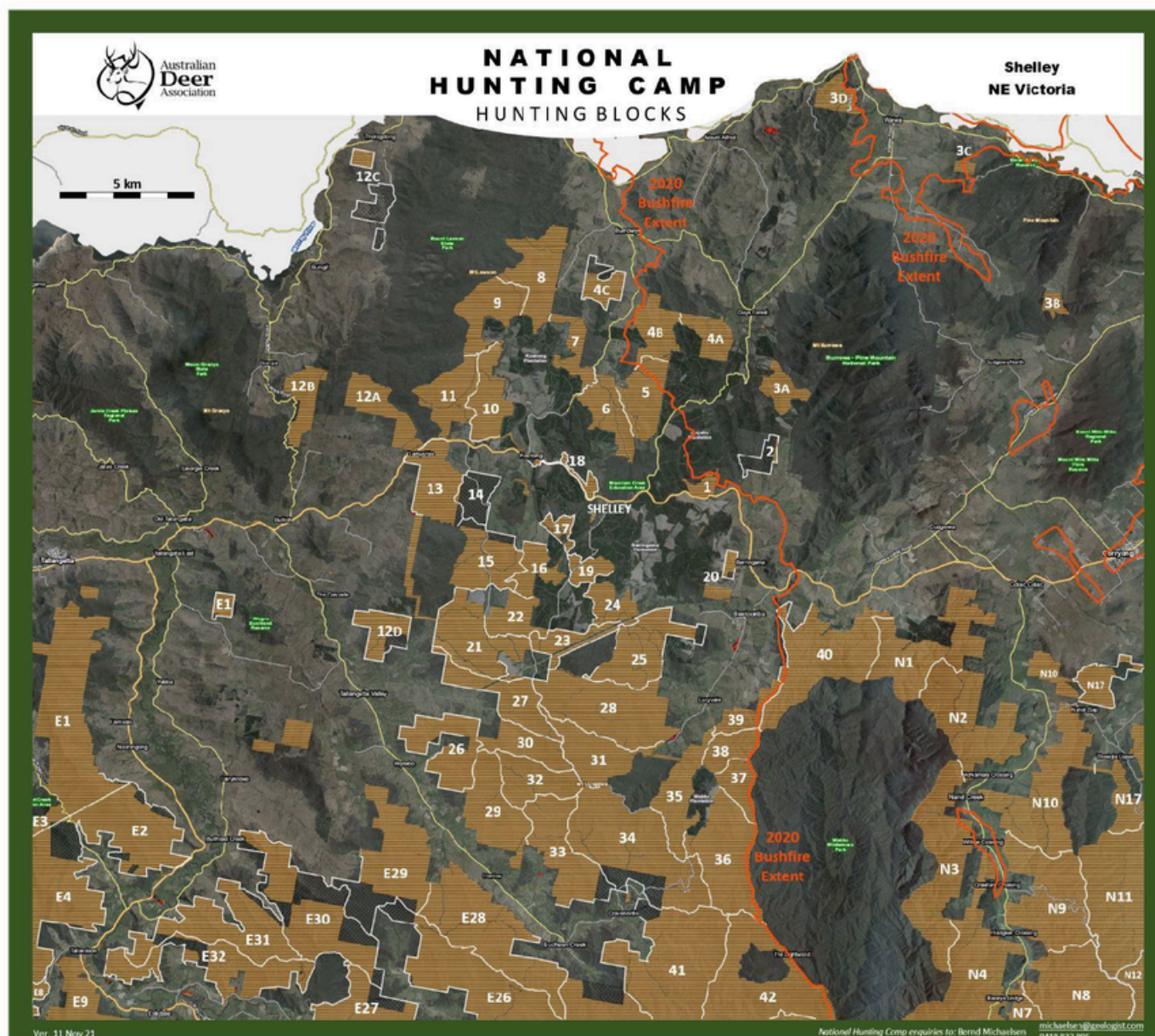
In numbering the offline maps, be guided by the "**Summary of hunting areas**" which is a separate JPG file I sent you- a copy of this map is at the end of this file (below). I suggest you start at Block 1; maybe sit beside your laptop to do this. Zoom over Block 1 and maximise the jelly-bean outline within the square (see above centre).

Choose **DOWNLOAD**.

Give the block a name, e.g. **Shelley block 1**. Make sure Shelley block 1 actually is Block 1, and so on – otherwise you'll make an awful mess. Then repeat the process, starting again by zooming over block 2, then 3A, 3B, 3C, 4A and so on. Grab a beer. Do this for all 42 blocks. Grab another beer.

Having done this once you will never need to do it again – **HuntStand** licencing arrangements allow for this. In contrast, if you want to download **Google Earth** imagery to your phone via **Google Maps**, the imagery will auto-delete after 30 days – but rest assured, not so with **HuntStand**.

Summary of hunting areas (hunting block numbers)



Bernd Michaelsen Update: 11 July 2022



AUSTRALIAN DEER ASSOCIATION
EMAIL: HUNTMASTER@AUSTDEER.ASN.AU
WEBSITE: WWW.AUSTDEER.COM.AU